



LM

feel the
difference

LM-Arte clinical case by Dr. Yoshihiro Kida

Text:

Product Manager
Roosa Prinssi

Clinical case:
Dr. Yoshihiro Kida

LM-Arte instrument set is designed for aesthetic layering of composite fillings. These innovated instruments are used by clinician in order to provide not only aesthetic, but high quality restorations.

Dr Yoshihiro Kida was first introduced to this set of instruments last year by an Italian colleague Dr Jordi Manauta. The fine tip shape and the compact finish of the instrument were impressive. First clinical uses convinced Dr Kida that it was easy to imitate anatomic shapes of the natural tooth with a good tactile feeling of the instrument.

The next clinical case description is a typical class 1 case of replacing an old, occlusal amalgam filling which were done in many cases in Japan before. A lot of the patients in later years are willing to replace them to composite upon treating secondary caries.

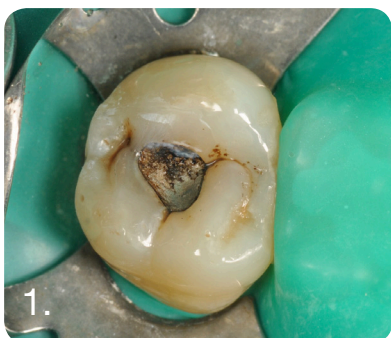


Photo 1: The initial clinical situation. An old amalgam filling in the upper molar which was to be replaced with a composite filling. The patient requested the caries treatment with aesthetic outcome. *Photo 2:* The occlusal cavity preparation. The cavity was treated with etching and bonding. *Photo 3:* A thin layer of flowable composite was then applied to the basis of the cavity with an LM-Arte Condensa instrument. After that composite was layered gradually.

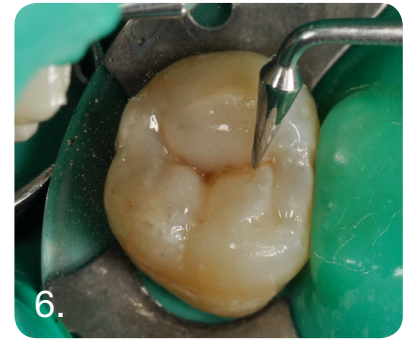
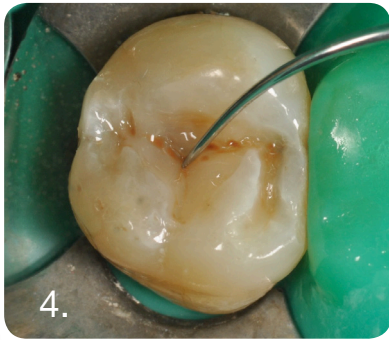


Photo 4: Occlusal fissures were characterized with LM-Arte Fissura instrument. The thin end of the instrument worked well with characterization composites. *Photo 5:* With LM-Arte Applica slopes and cusps were carefully modeled. *Photo 6:* The conical end of LM-Arte Fissura instrument defined the fissure lines and slopes, all the finishing details.

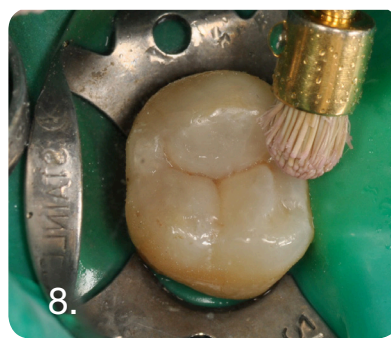
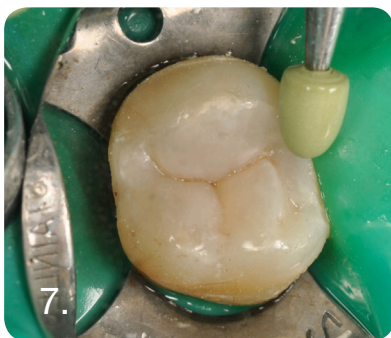


Photo 7: Finishing of the filling.

Photo 8: Polishing of the filling.

Photo 9: The final result.



Yoshihiro Kida, D.D.S., Ph.D.

2000 graduated from Showa University school of Dentistry

2004 obtained Ph.D degree in Periodontology from Showa University graduate school of Dentistry

Worked for private practice, and learned and earned comprehensive treatment experiences in the areas of periodontics, implants and aesthetic prosthetics

2011 founded private office in Honjo, Saitama Prefecture Japan

A member of The Japanese Society of Periodontology and a Periodontal Specialist

A member of the Academy of Microscope Enhanced Dentistry

A member of design Technique International (dT*i*)