

LMArte™

LM

feel the
difference



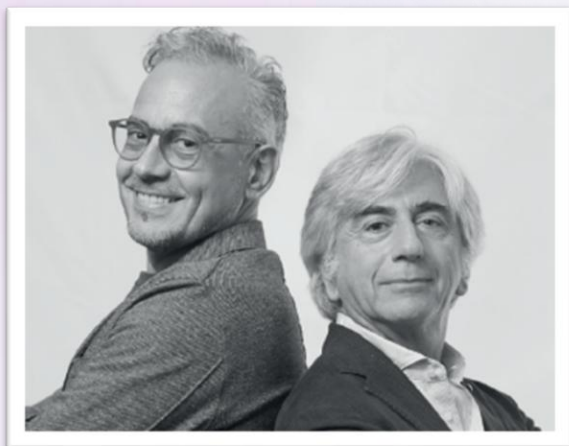
SCULPT MASTERPIECES

ESTHETIC LAYERING SUCCESS

LM-Arte™ is a set of innovative instruments for esthetic restorations that is designed especially for composite layering. Each instrument is color-coded and named after its main function, enabling you to administer easy, efficient and quick restorative treatments. The lightweight and ergonomic LM™ handle design, together with high-quality tip materials, provides excellent tactile sensitivity and easy handling for the best clinical results.

COLLABORATION WITH STYLEITALIANO™

LM-Arte™ instrument series has been developed in collaboration with Style Italiano™, a group of skilled dentists who share our passion for improving dentistry.



The Styleitaliano™ movement emerged from a simple idea of two friends - Dr. Walter Devoto and Dr. Angelo Putignano. The renowned experts in conservative and esthetic dentistry had noticed that although materials suitable for creating beautiful direct restorations were available, appropriate instruments for employing these successfully were lacking. With LM-Dental™'s dedication to manufacturing excellence the unique concept of LM-Arte™ instruments was developed, and it has been a breakthrough in esthetic dentistry.

LMArte™ Dark Diamond edition

PLEASANT AND PRECISE SCULPTING OF COMPOSITE

LM-Arte™ Dark Diamond instruments are the newest outcome of StyleItaliano™ and LM-Dental™ collaboration featuring exclusive coating for smooth and precise non-stick placement and sculpting of composite resins.



The sensitivity, flexibility and precision are the same as with conventional LM-Arte™ instruments, but the LM Dark Diamond™ coating eliminates the issue of resin sticking to spatulas, even for the most delicate resins."

Dr. Paulo Monteiro, Honorary Member of StyleItaliano™



What do the
StyleItaliano™
experts say?
Watch the video!

LM

feel the
difference



PRODUCT RANGE WITH NON-STICK COATING

LM

feel the
difference



LM-Arte™ Eccesso DD

LMErgoSense®

307-308DDES



LM-Arte™ Modella DD

LMErgoSense®

442-443DDES



LM-Arte™ Fissura DD

LMErgoSense®

481-487DDES



LM-Arte™ Applica DD

LMErgoSense®

46-49DDES



LM-Arte™ Condensa DD

LMErgoSense®

488-489DDES

LM Dark Diamond™ unique benefits!

- Contemporary diamond-like carbon (DLC) coating reduces stickiness for smooth composite placement
- Hard surface protecting the tip from scratches
- Smooth surface for easy cleaning
- Dark coating color for minimal reflections, and maximal contrast against filling
- Ergonomic LM-ErgoSense® handle for excellent precision and feel

LM-Arte™ Dark Diamond set

Set of LM-Arte™ instruments with exclusive non-stick LM Dark Diamond™ coating in LM-Servo™ 5 cassette including

- LM-Arte™ Eccesso DD,
- LM-Arte™ Modella DD,
- LM-Arte™ Fissura DD,
- LM-Arte™ Applica DD
- LM-Arte™ Condensa DD

LMErgoSense®

6845ES



COMPREHENSIVE INSTRUMENT RANGE

LM feel the difference



LM-Arte™ Set

Full set of instruments for anterior restorations in LM-Servo™ 5 cassette including

- LM-Arte™ Eccesso,
- LM-Arte™ Misura,
- LM-Arte™ Fissura,
- LM-Arte™ Applica
- LM-Arte™ Condensa

LMErgoSense® 6840 ES

LMErgoMax™ 6840 XSI



LM-Arte™ Posterior Set

Full set of instruments for posterior restorations in LM-Servo™ 5 cassette including

- LM-Arte™ Posterior Misura,
- LM-Arte™ Cusp Misura,
- LM-Arte™ Fissura,
- LM-Arte™ Modella
- LM-Arte™ Condensa

LMErgoSense® 6844 ES

LMErgoMax™ 6844 XSI



LM-Arte™ Complete Set

Full set of instruments for any restoration cases in LM-Servo™ 8 cassette including

- LM-Arte™ Eccesso,
- LM-Arte™ Misura,
- LM-Arte™ Applica,
- LM-Arte™ Posterior Misura,
- LM-Arte™ Cusp Misura,
- LM-Arte™ Fissura,
- LM-Arte™ Modella
- LM-Arte™ Condensa

LMErgoSense® 6848 ES

LMErgoMax™ 6848 XSI

Handle options



LMErgoSense®

All LM-Arte™ instruments are available with LMErgoSense® handle with larger diameter and design providing exceptional grip proven to be ergonomic and efficient in scientific clinical testing. Ø 13.7 mm

LM-ErgoSense® handle is available with an integrated LM DTS™ RFID tag, a unique feature for improved asset management and patient safety. See more at www.dentaltracking.com.



LMErgoMax™

Uncoated instruments are available also with the classic ergonomic handle design which functions well in all clinical procedures and guarantees excellent tactile sensitivity. Ø 11.5 mm



LM-Arte™ Applica

LMErgoSense®

46-49 ES

LMErgoMax™

46-49 XSI



LM-Arte™ Applica Twist

LMErgoSense®

464-494 ES

LMErgoMax™

464-494 XSI



LM-Arte™ Modella

LMErgoSense®

442-443 ES

LMErgoMax™

442-443 XSI



LM-Arte™ Condensa

LMErgoSense®

488-489 ES

LMErgoMax™

488-489 XSI



LM-Arte™ Misura

LMErgoSense®

496-497 ES

LMErgoMax™

496-497 XSI



LM-Arte™ Posterior Misura

LMErgoSense®

498-499 ES

LMErgoMax™

498-499 XSI



LM-Arte™ Cusp Misura

LMErgoSense®

468-469 ES

LMErgoMax™

468-469 XSI



LM-Arte™ Fissura

LMErgoSense®

481-487 ES

LMErgoMax™

481-487 XSI



LM-Arte™ Eccesso

LMErgoSense®

307-308 ES

LMErgoMax™

307-308 XSI



LM-Arte™ Solo Anterior

LMErgoSense®

431-433 ES

LMErgoMax™

431-433 XSI



LM-Arte™ Solo Posterior

LMErgoSense®

434-438 ES

LMErgoMax™

434-438 XSI



LM-Arte™ Replica Posterior

LMErgoSense®

448-449ES

LMErgoMax™

448-449XSI



LM-Arte™ Replica Anterior

LMErgoSense®

451-452ES

LMErgoMax™

451-452XSI

NEW!

LMArte™ Solo Anterior and Posterior

INSTRUMENT DUO FOR SIMPLYFYING YOUR DAILY CASES

LM

feel the
difference

Streamline your restorative instrumentation with the instrument duo that is all you need for your daily anterior and posterior direct composite restoration cases. With just two instruments, you can perform most of your high-end anterior and posterior restorations, with fewer instruments needed on the tray.



ONE INSTRUMENT FOR DIRECT VENEERING: LM-Arte™ Solo Anterior

Instrument for high-end restorations. Rounded and straight spatulas are designed for modeling anterior teeth, especially labial surfaces.

Sharp tip
Precision modeling
Micromodeling
Limit marking
Scratching

Straight edges
Scraping

Flat profile
Flattening
Uniform



Thin blade
Proximal modeling

Convex profile
One-point modeling
Create depressions
Create buccal profile
Create cervical profile
Access difficult areas

Angled edge
Definition
Scraping



Sharpened edges
Cut, split, separate
Marginal ridges

Rounded tip
Delicate delimitation
Cervical contouring



ONE INSTRUMENT FOR POSTERIOR: LM-Arte™ Solo Posterior

Instrument for high-end posterior composite restorations. The plugger end is designed for bulk filling and composite material modeling. The sharp end enables contouring of the occlusal surface anatomy.

Flat profile

Big excess removal
Medium excess removal

Angulation

Access for deep cavities

Flat end

Plugger

Semi-rounded edges

Slope forming
Excess removal
Margin removal

4-5 mm bulk-fill safety area

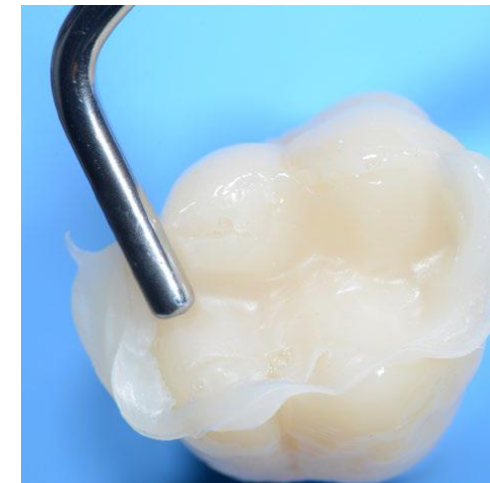
Probe for bulk-fill materials

Tapered profile

Fine excess removal
Slope modeling
Secondary anatomy

Sharp tip

Precision modeling
Micromodeling
Limit marking
Scratching
Flow distribution
Bubble elimination



REPLICATE EASILY

LM

feel the
difference

LM-Arte™ Replica Posterior

Clever instrument designed for simplifying occlusal modeling of posterior teeth in direct composite restorations. The instrument makes occlusal modeling fast, simple and predictable. Occlusal anatomy of single tooth can be made easily guided by the buccal cusps using replica technique with this specific instrument

Adapt



Shape



Replicate



Concave surface

- Cusp accentuation
- Ridge formation
- Cusp demarcation
- Removing excess composite

Convex profile

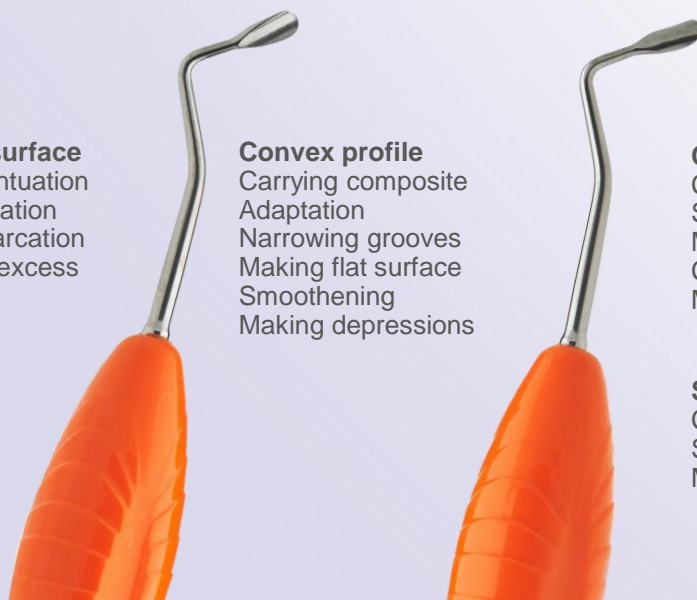
- Carrying composite
- Adaptation
- Narrowing grooves
- Making flat surface
- Smoothing
- Making depressions

Curved sharp edge for

- Cutting
- Splitting
- Making grooves
- Cusp demarcation
- Marking curve

Side edges

- Cutting
- Splitting
- Making lines



The uniquely designed LM-Arte™ Replica Posterior instrument has been developed in co-operation with Dr. Osama Shaalan, Member of StyleItaliano™ group

SIMPLIFY ANTERIOR ART

LM

feel the
difference

LM-Arte™ Replica Anterior

LM-Arte™ Replica Anterior is a revolutionary instrument for anterior composite restorations combining simplicity and unique design. The instrument boosts the entire workflow starting from precise adaptation, then pre-forming the surface anatomy and shape, and finally minimizing the finishing process.

LM-Arte™ Replica Anterior is complimentary to LM-Arte™ Replica Posterior instrument: this instrument duo provides one instrument solution for both anterior and posterior composite restorations.

Inner surface

- Creating depressions
- Forming surface grooves
- Creating convexities
- Forming ridges
- Replicating surface anatomy

Curved sharp end

- Splitting
- Cutting
- Shaping mamelons
- Cervical adaptation
- Incisal embrasure modeling
- Palatal adaptation
- Carrying composite
- Creating grooves
- Accentuations

Side edges

- Removing excess composite
- Shaping mamelons
- Cutting
- Splitting

Outer surface

- Carrying composite
- Making flat surface
- Surface adaptation
- Creating depressions
- Forming surface grooves
- Creating convexities
- Forming ridges
- Replicating surface anatomy

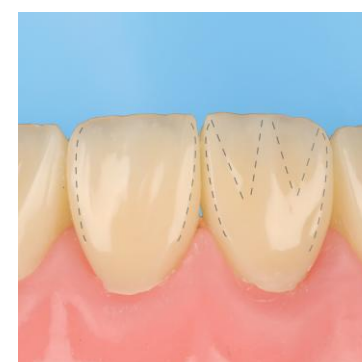
Adapt



Shape



Replicate



NEW!



The uniquely designed LM-Arte™ Replica Anterior instrument has been developed in co-operation with Dr. Osama Shaalan, Member of StyleItaliano™ group.

Two Shades Dentin + Enamel



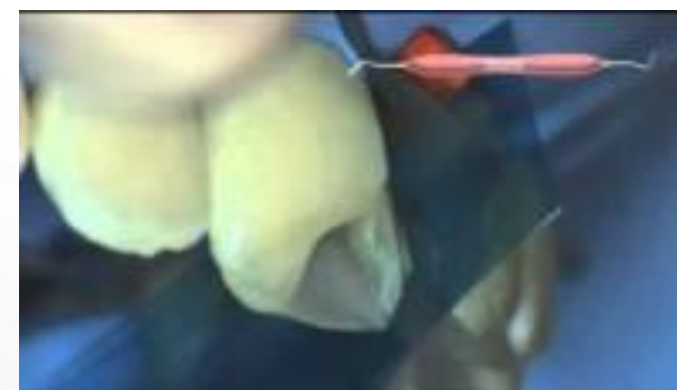
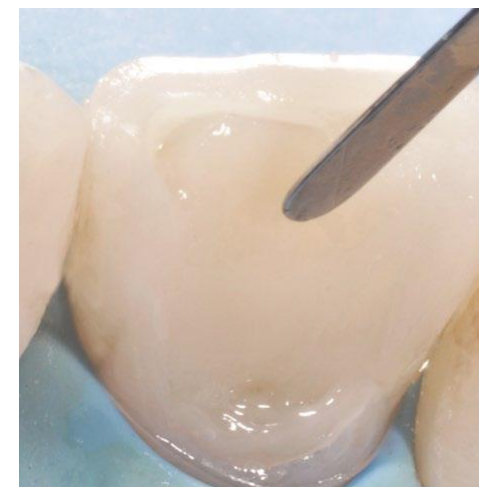
One Universal Shade



APPLY ELASTICALLY

LM-Arte™ Applica

- A very thin, flexible spatula designed for transporting and aesthetic modeling of the composite.
- The flexible working end gently and precisely sculpts composite layers to imitate the natural shape of the tooth
- The thin tip enables modeling in narrow spaces or against the matrix band.



LM-Arte™ Applica

LM

feel the
difference



APPLY WITH A TWIST

LM-Arte™ Applica Twist

- Especially fine, flexible and narrow spatula for composite modeling.
- Instrument is used for easy modeling in the approximal spaces and marginal ridges in the matrix.
- Bent tips make it possible to reach awkward areas without complicating the working position on the hand unnecessarily.



MODEL FLEXIBLY

LM-Arte™ Modella

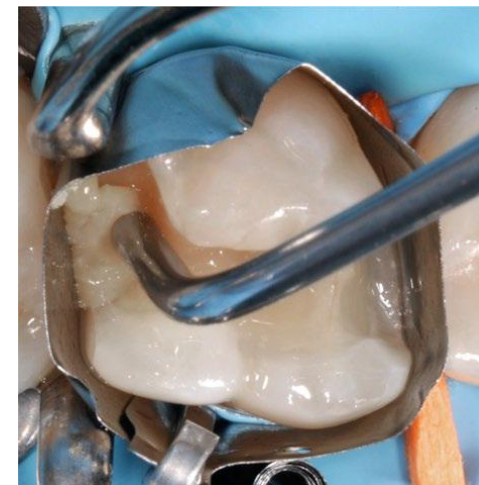
- Especially fine and wide spatula for composite modeling.
- Particularly suited to large tooth surfaces such as the buccal surfaces of the incisors.
- The wide spatula end flattens the composite efficiently.
- The flexibility, delicacy and sharpness of the tip helps to create precise aesthetic details.
- Works well for applying the composite from a syringe.



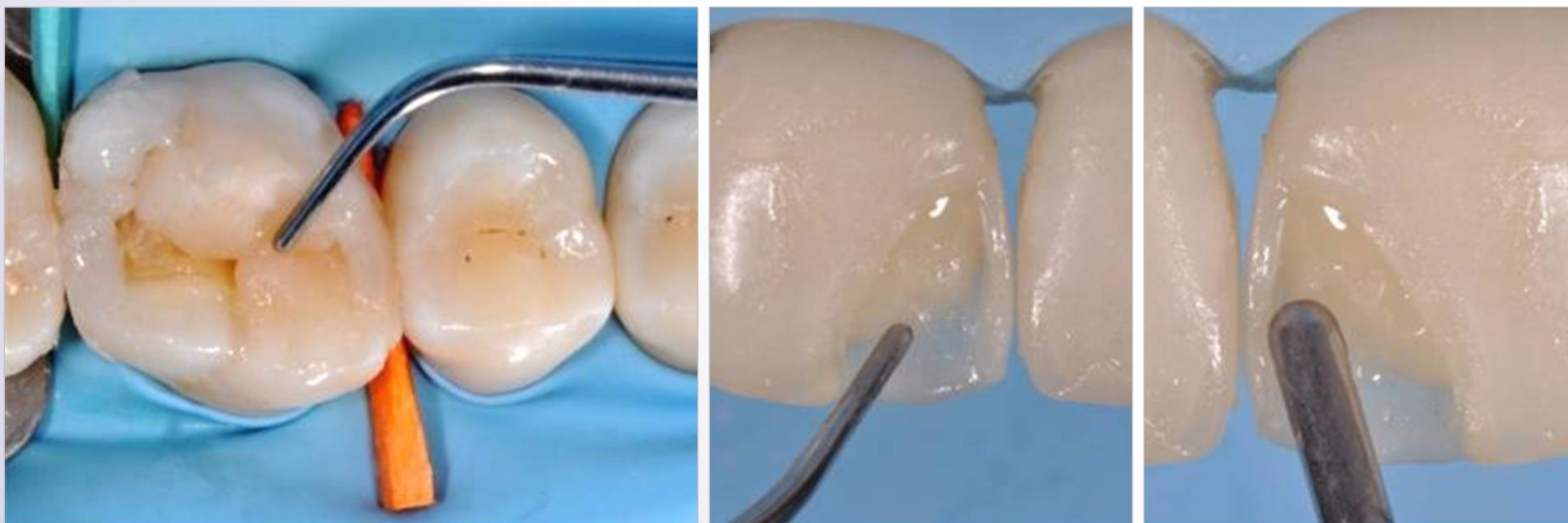
PUSH SOFTLY

LM-Arte™ Condensa

- A long, round plugger designed especially for modeling a composite.
- The angulated shanks enable unrestricted access to all cavities.
- Instrument has both a thick and a thin tip that can be used in cavities of different sizes, in both anterior and posterior areas.
- The rounded working end enables a delicage compacting of composite without any risk of adhesion.



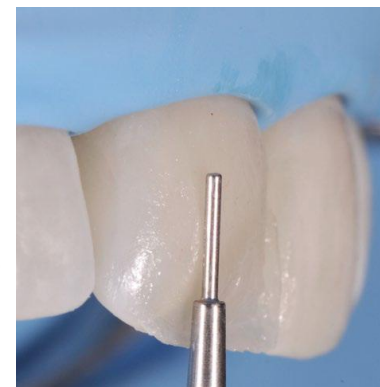
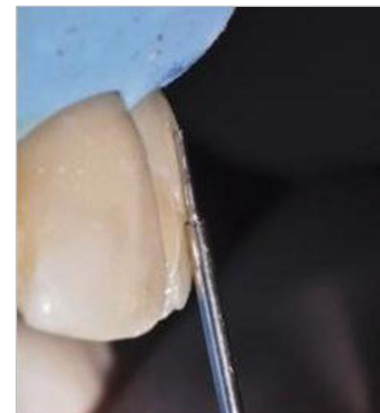
LM-Arte™ Condensa



APPLY EVENLY

LM-Arte™ Misura

- A unique instrument used to apply the correct horizontal and vertical thicknesses of composite layers on the anterior restorations.
- After the layering but before the polymerization of the dentine composite, the thinner, cylindrical tip is placed on the natural tooth enamel. The unpolymerized composite below the cylindrical tip is then gently modeled, leaving an optimal space for the enamel composite layer.
- The thicker, short tip of the instrument is placed horizontally on the margin of the prepared cavity, leaving the edge of the tip on the original enamel. This allows you to determine the right amount of transparent composite to apply on the finishing line.
- The final aesthetic restoration consists of correctly balanced opaque and translucent composites, avoiding the unpleasant gray effect of some composites.



FILL EVENLY

LM-Arte™ Posterior Misura

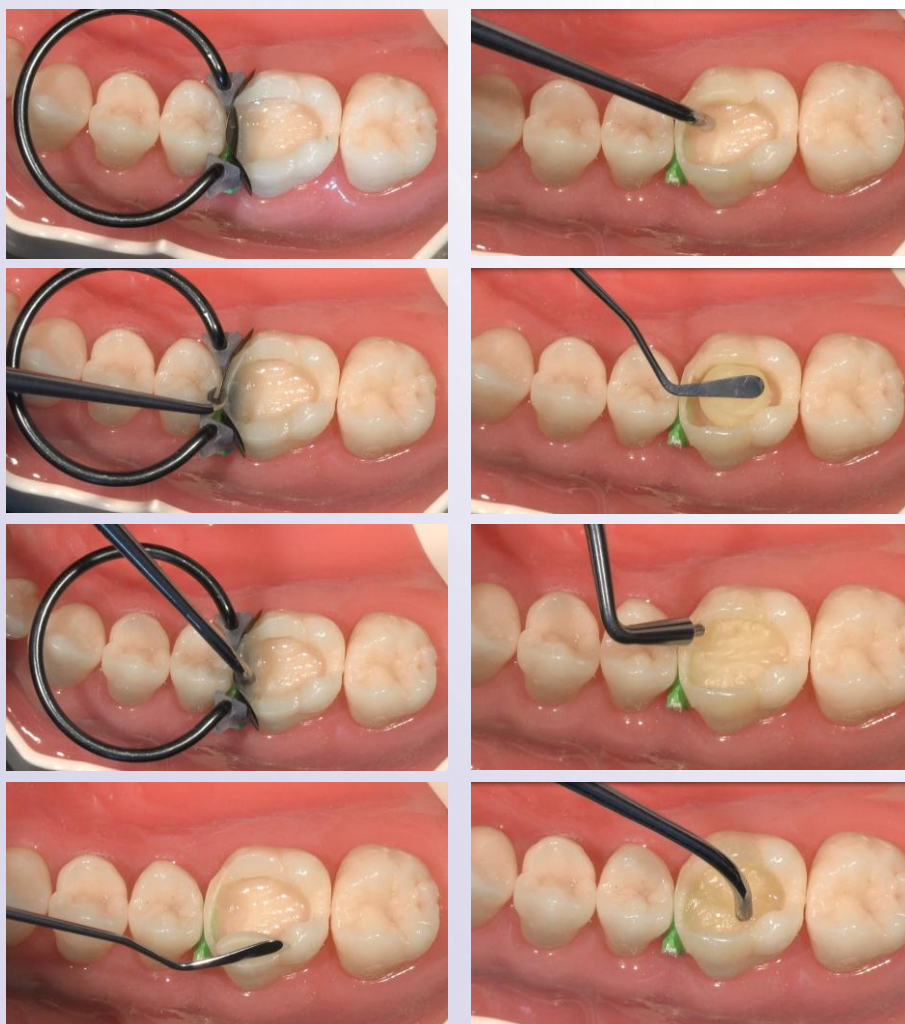
- Posterior version of the popular LM-Arte™ Misura instrument.
- Designed for providing the required vertical thickness of composite layers on posterior restorations.
- The fork tip of the instrument allows modeling of the proximal wall to match the height and anatomy of the neighboring tooth with the presence of a matrix.
- The tip is placed horizontally on the margin of the prepared cavity so that the edge of the tip remains on the original enamel. This determines the right amount of transparent composite to apply on the finishing line.



LM-Arte™ Posterior Misura



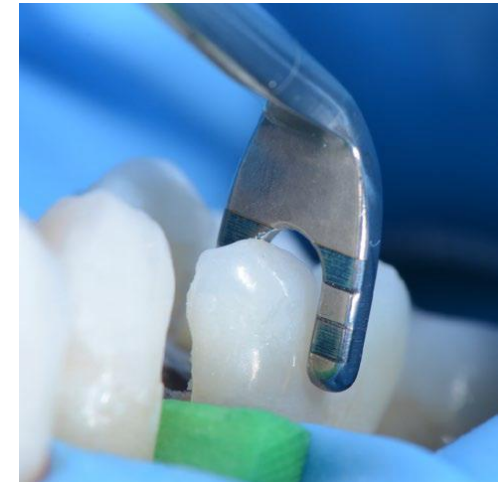
Direct posterior restoration with LM-Arte™



EVALUATE EXPLICITLY

LM-Arte™ Cusp Misura

- Unique instrument for estimating cusp thickness and height for evaluating the need for cusp preparation when performing adhesive restorations. Ideal for evaluating the strength of the natural tooth structure and choosing the restorative technique to be used.
- If the forked instrument tip penetrates up to its marks, the tooth structure is too weak to withhold occlusal forces with a direct restoration, and other clinical options must be considered.



LM-Arte™ Cusp Misura



SCULPT DELICATELY

LM-Arte™ Fissura

- A modeling instrument with extremely sharp pointed tips.
- The conical tip is perfect for sculpting the anatomy of occlusal area of the posterior teeth.
- The fine, probe-shaped tip is optimal for modeling fissures and mamelons as well as for layering characterization composites and sealants.
- The flexibility of instrument enables the gentle probing to ensure there is no excess bonding resin remaining on tooth surfaces.



LM-Arte™ Fissura



FINISH NEATLY

LM-Arte™ Eccesso

- An instrument designed for the removal of composite and bonding residue.
- The special angulated working ends of the instrument are ideal for the removal of excess from cervical anterior and interproximal molar areas.
- This fine but solid instrument is characterized by the optimized length, thickness and width of its blade.



LM-Arte™ Eccesso



OVERCOME THE GINGIVAL RETRACTING CHALLENGE

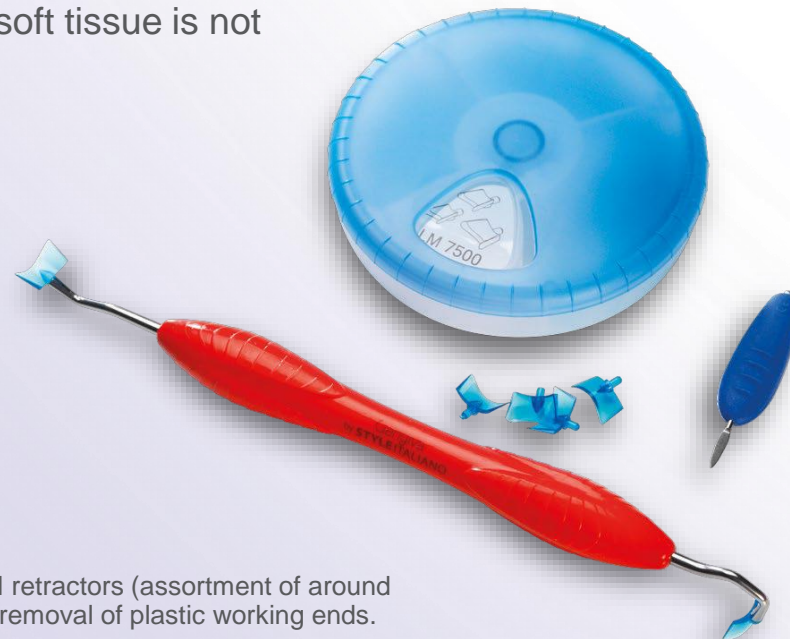
The aim in restorative treatment of a cervical lesion is to achieve perfect margin sealing, a strong bond, and optimal polishing of the composite material. Mechanical gingival retraction in cervical restorations can be traumatic if improperly performed.

The LM-Gengiva™ instrument with gingival retractors is used to avoid injuring the gingiva unnecessarily and obtain the best clinical result. With this method, the desired end result is achieved: the soft tissue is not harmed and the aesthetic requirements are met.

LM-Gengiva™ gingival retracting kit

LMergoSense®	7556K ES
LMergoMax™	7556K XSI

Incl. Lm-gengiva™ hand instrument, blue gingival retractors (assortment of around 90 pcs, 30 pcs / size) and lm-multilever™ for the removal of plastic working ends.



GINGIVAL RETRACTORS

- Retract the gingiva from the restoration
- Hard plastic tip allows for a strong retraction
- The plastic tips allow a certain flexibility for more adaptation while pressing
- The tip acts as a tight seal between the gingiva and tooth
- Protects the gingiva and reduces the likelihood of debonding failure
- The bonding interface and the gingival margin can be seen clearly; ideal contrast with soft tissues
- Can be customized with a drill to fit a convex or concave root detect
- No bonding of the adhesive materials to the tip surface
- No interference with polymerization
- Disposable

SCULPT MASTERPIECES



LM

feel the
difference

THANK YOU!

