

LM-ProPower UltraLED QuickGuide

LM

feel the
difference

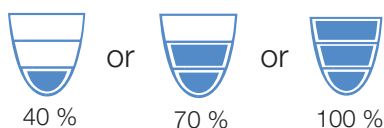
DVD:



Ultrasonic device

Control panel:

To **turn on the scaler**, press **ON** and then choose the right working mode that is marked on each tip:



With every push on the **ON** key, the function toggles from:

1. Scaling with water
2. Dry mode: scaling without water
3. Irrigation mode: just water, no scaling



The unit is **standby** when the power cord is connected and the green LED is illuminated.

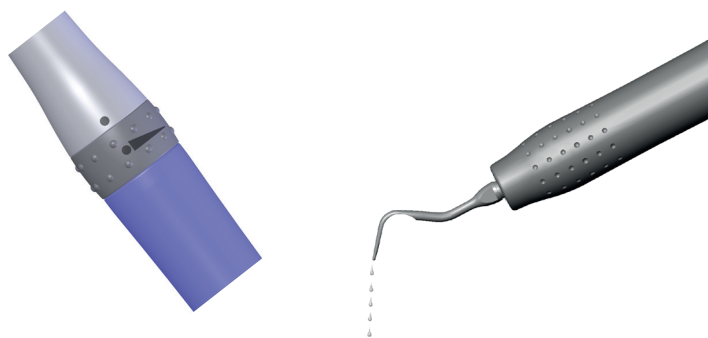
Comprehensive cleaning function:

The cleaning function can be started by pressing **C**. Water or disinfectant cleans the water line and handpiece. The cleaning cycle stops automatically after **80 seconds**.

To switch off the device push the **OFF** key .

Water regulation:

Depress the foot control in the left-most position and adjust the water flow with the control ring on the scaler handpiece until the water is dripping.

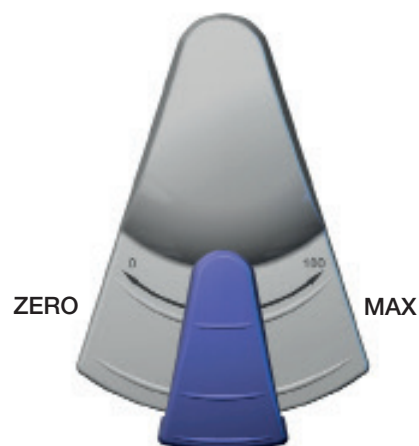


Foot control:

The scaler is **activated** when the foot control is pressed down. The power is regulated from left/ZERO to right/MAX within the chosen working mode.

In ZERO position there are two functions:

- a) irrigation with no scaling power: hold the footpedal down.
- b) diagnostic light: press the footpedal once.

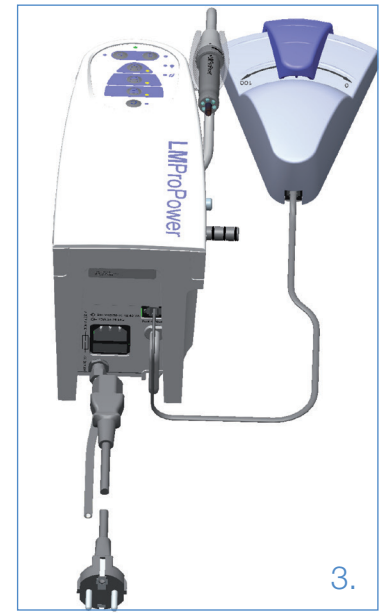
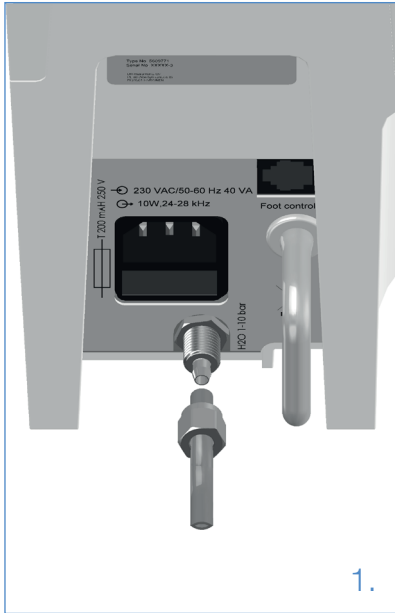


Problems? See troubleshooting in the manual.

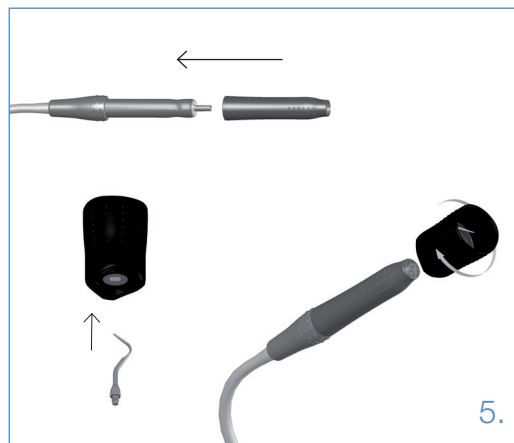
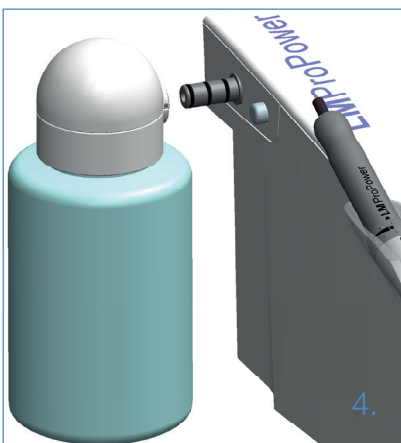
LM-ProPower UltraLED Installation

NOTE! Before installing and using the device please read the manual.

1. Consult a qualified technician to install to water supply if applicable.
2. Connect the foot control cable to the foot control and to the rear side of the unit.
3. Connect the power cord to the unit and the AC power outlet.



4. Fill the medicament bottle with water or medicament solution, screw the bottle connector onto the bottle and push it onto the connector on the left side. When removing the bottle, press first the depressurisation button beside the connector.
5. Gently slide the LM-ErgoGrip onto the scaler handpiece. Place the tip in the torque wrench and use the torque wrench to screw the tip clockwise onto the scaler handpiece. Tighten until resistance and the torque wrench slides.



6. See the **operational instructions** in the manual.