

# LM-ProPower CombiLED QuickGuide

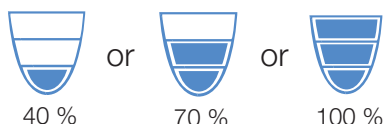
LM

feel the difference

DVD:    

## Ultrasonic device

To **turn on the scaler**, press **S** and then choose the right working mode that is marked on each tip:



With every push on the **S** key, the function toggles from:

1. Scaling with water
2. Dry mode: scaling without water
3. Irrigation mode: just water, no scaling

### Water regulation:

Depress the foot control in the left-most position and adjust the water flow with the control ring on the scaler handpiece until the water is dripping.

The scaler is **activated** when the foot control is pressed down. The power is regulated from left/ZERO to right/MAX within the chosen working mode.

In **ZERO** position there are two functions:

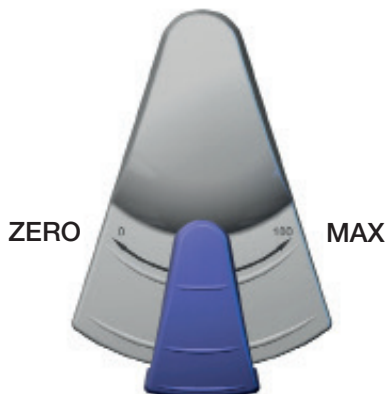
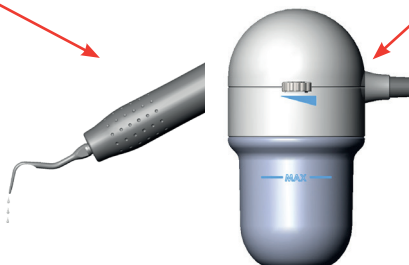
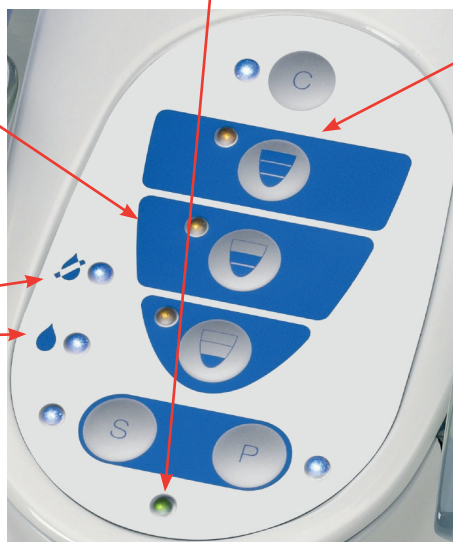
- a) irrigation with no scaling power: hold the foot pedal down.
- b) diagnostic light: press the footpedal once.

### Comprehensive cleaning function:

Turn off the scaler by holding down **S** for a few seconds. Now the cleaning function can be started by pressing first **C** and then **S**. Water or disinfectant cleans the water line and handpiece. The cleaning cycle stops automatically after **80 seconds**.

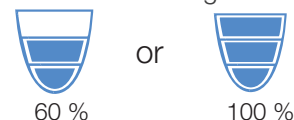
To **switch off** the scaler press the **S**-key for 3 seconds.

The unit is **standby** when the power cord is connected and the green LED is illuminated.



## Polisher

To **turn on the polisher**, press **P** and then choose the working mode:



This working mode cannot be activated when using the polisher.

With every push on the **P** key, the function toggles from:

1. Normal polishing
2. Air cleaning (only air)
3. WaterJet cleaning (only water and air)

### Water regulation:

Depress the foot control and slowly reduce the water flow with the water control wheel on the side of the powder container until the powder starts to accumulate on the surface as a white spot. Increase the water flow until the spot disappears. The polisher is now balanced for optimal performance.

The polisher is **activated** when the foot control is pressed down. The polishing power is regulated from: left/ZERO = WaterJet (only water and air) middle & right/MAX = **60 or 100%** depending on which working mode is chosen on the control panel.

### Air purge quick cleaning function:

To prevent clogging; air purge the handpiece after each polisher treatment by pressing **C**.

### Comprehensive cleaning function:

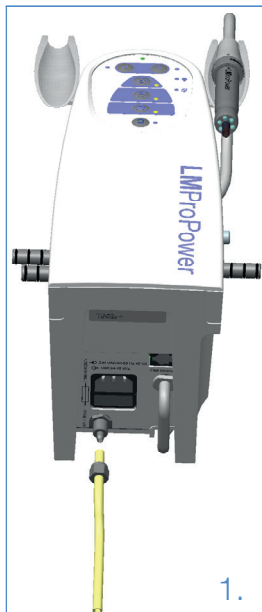
Turn off the polisher by holding down **P** for a few seconds. Now the cleaning function can be started by pressing first **C** and then **P**. Water or disinfectant (40 sec) and air (40 sec) cleans the handpiece. The cleaning cycle stops automatically after **80 seconds**.

To **switch off** the polisher press the **P**-key for 3 seconds.

# LM-ProPower CombiLED Installation

NOTE! Before installing and using the device please read the manual.

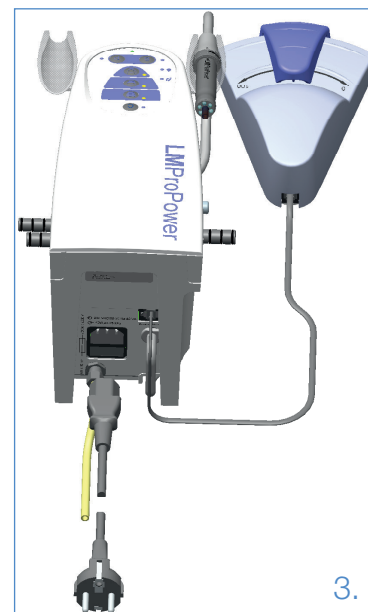
1. Consult a qualified technician to install to air and, if applicable, to water supply.
2. Connect the foot control cable to the foot control and to the rear side of the unit.
3. Connect the power cord to the unit and the AC power outlet.



1.

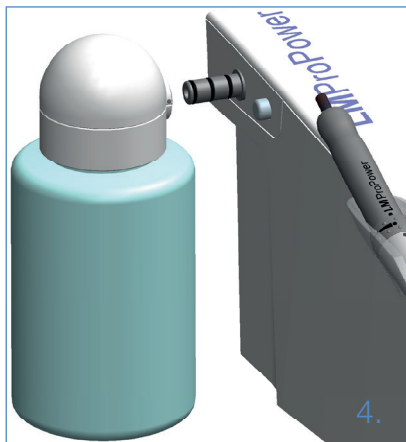


2.



3.

4. Fill the medicament bottle with water or medicament solution, screw the bottle connector onto the bottle and push it onto the connector on the left side.
5. a. Unscrew the powder container from the cap and fill with LM-ProPower polisher powder up to MAX. Screw the container back to the cap.
5. b. Connect the powder container to the connectors on the right side of the unit.



4.

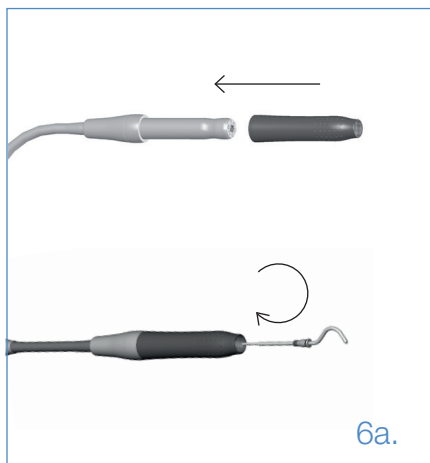


5a.

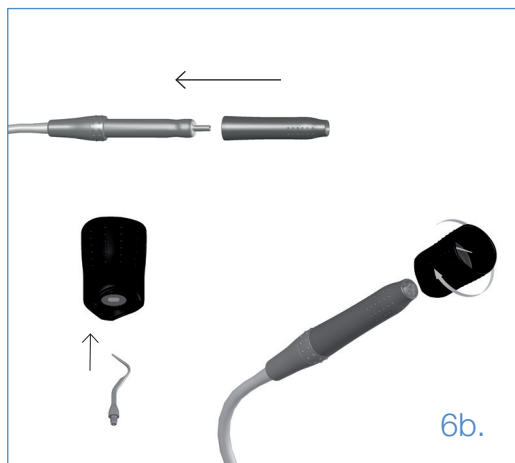


5b.

6. a. Gently slide a LM-ErgoGrip onto the polisher handpiece. Screw the nozzle clockwise into the polisher handpiece until the nozzle is firmly tightened up.
6. b. Gently slide a LM-ErgoGrip onto the scaler handpiece. Place the tip in the torque wrench and use the torque wrench to screw the tip clockwise onto the scaler handpiece. Tighten until resistance and the torque wrench slides.



6a.



6b.

7. See the **operational instructions** in the manual.



**LMDental**  
LM-Instruments Oy  
Norbyntie 8  
FI-21600 Parainen  
Finland  
+358 2 4546 400  
info@lm-dental.com  
www.lm-dental.com

0517\_9770113F