

LMarte™

LM

feel the  
difference



SCULPT MASTERPIECES



## LMArte™ restorative instruments

### ESTHETIC LAYERING SUCCESS

LM-Arte™ is a set of innovative instruments for esthetic restorations that is designed especially for composite layering. Each instrument is color-coded and named after its main function, enabling you to administer easy, efficient and quick restorative treatments. The lightweight and ergonomic LM™ handle design, together with high-quality tip materials, provides excellent tactile sensitivity and easy handling for the best clinical results.

### COLLABORATION WITH STYLEITALIANO™

LM-Arte™ instrument series has been developed in collaboration with Styleitaliano™, a group of skilled dentists who share our passion for improving dentistry.



The Styleitaliano™ movement emerged from a simple idea of two friends - Dr. Walter Devoto and Dr. Angelo Putignano. The renowned experts in conservative and esthetic dentistry had noticed that although materials suitable for creating beautiful direct restorations were available, appropriate instruments for employing these successfully were lacking. With LM-Dental's™ dedication to manufacturing excellence the unique concept of LM-Arte™ instruments was developed, and it has been a breakthrough in esthetic dentistry.

## BE PART OF THE SUCCESS!

Visit StyleItaliano™ website at [www.styleitaliano.org](http://www.styleitaliano.org) for restorative clinical cases with LM-Dental's™ instruments



Follow and join the StyleItaliano™ community on social media channels



StyleItaliano™ is a growing community of skilled dental practitioners who contribute ideas to enhance the simplicity and predictability of everyday dental procedures. Today, it reaches thousands of dentists on social media through illustrative demonstration videos, lectures, courses and conferences.



**VISIT THE WEBSITE**  
at [www.lm-dental.com/LM-Arte](http://www.lm-dental.com/LM-Arte)  
and be part of the success!

# SCULPT MASTERPIECES





# COMPREHENSIVE INSTRUMENT RANGE



LM-Arte™ Applica

<b>LMErgoSense®</b>	46-49ES
<b>LMErgoMax™</b>	46-49XSI



LM-Arte™  
Applica Twist

<b>LMErgoSense®</b>	464-494ES
<b>LMErgoMax™</b>	464-494XSI



LM-Arte™ Modella

<b>LMErgoSense®</b>	442-443ES
<b>LMErgoMax™</b>	442-443XSI



LM-Arte™ Condensa

<b>LMErgoSense®</b>	488-489ES
<b>LMErgoMax™</b>	488-489XSI



LM-Arte™ Misura

<b>LMErgoSense®</b>	496-497ES
<b>LMErgoMax™</b>	496-497XSI



LM-Arte™  
Posterior Misura

<b>LMErgoSense®</b>	498-499ES
<b>LMErgoMax™</b>	498-499XSI



LM-Arte™  
Cusp Misura

<b>LMErgoSense®</b>	468-469ES
<b>LMErgoMax™</b>	468-469XSI



LM-Arte™ Fissura

<b>LMErgoSense®</b>	481-487ES
<b>LMErgoMax™</b>	481-487XSI



LM-Arte™ Eccesso

<b>LMErgoSense®</b>	307-308ES
<b>LMErgoMax™</b>	307-308XSI



LM-Arte™  
Solo Anterior

<b>LMErgoSense®</b>	431-433ES
<b>LMErgoMax™</b>	431-433XSI



LM-Arte™  
Solo Posterior

<b>LMErgoSense®</b>	434-438ES
<b>LMErgoMax™</b>	434-438XSI



LM-Arte™  
Replica Posterior

<b>LMErgoSense®</b>	448-449ES
<b>LMErgoMax™</b>	448-449XSI



LM-Arte™  
Replica Anterior

<b>LMErgoSense®</b>	451-452ES
<b>LMErgoMax™</b>	451-452XSI

## SELECTED INSTRUMENT SETS FOR YOUR UNIQUE RESTORATIONS



### LM-Arte™ Set

Full set of instruments for anterior restorations in LM-Servo™ 5 cassette including

- LM-Arte™ Eccesso
- LM-Arte™ Misura
- LM-Arte™ Fissura
- LM-Arte™ Applica
- LM-Arte™ Condensa

**LMErgoSense®** 6840ES

**LMErgoMax™** 6840XSI



### LM-Arte™ Posterior Set

Full set of instruments for posterior restorations in LM-Servo™ 5 cassette including

- LM-Arte™ Posterior Misura
- LM-Arte™ Cusp Misura
- LM-Arte™ Fissura
- LM-Arte™ Modella
- LM-Arte™ Condensa

**LMErgoSense®** 6844ES

**LMErgoMax™** 6844XSI



### LM-Arte™ Complete Set

Full set of instruments for any restoration cases in LM-Servo™ 8 cassette including

- LM-Arte™ Eccesso
- LM-Arte™ Misura
- LM-Arte™ Applica
- LM-Arte™ Posterior Misura
- LM-Arte™ Cusp Misura
- LM-Arte™ Fissura
- LM-Arte™ Modella
- LM-Arte™ Condensa

**LMErgoSense®** 6848ES

**LMErgoMax™** 6848XSI

### Handle options



**LMErgoSense®**

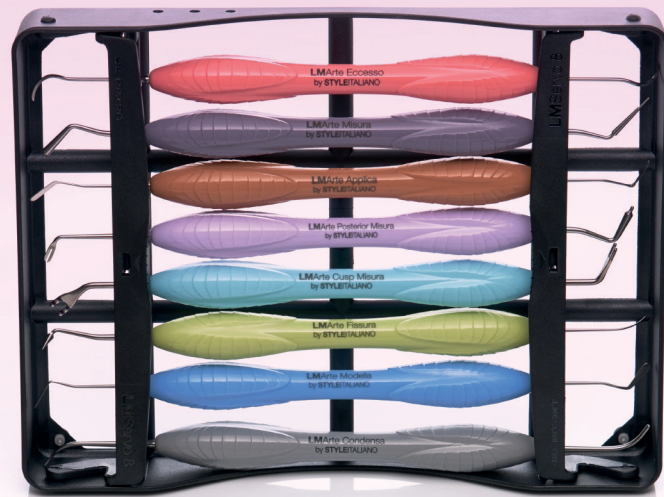
All LM-Arte™ instruments are available with LMErgoSense® handle with larger diameter and design providing exceptional grip proven to be ergonomic and efficient in scientific clinical testing. Ø 13.7 mm

LM-ErgoSense® handle is available with an integrated LM DTS™ RFID tag, a unique feature for improved asset management and patient safety. See more at [www.dentaltracking.com](http://www.dentaltracking.com)



**LMErgoMax™**

Uncoated instruments are available also with the classic LMErgoMax™ ergonomic handle design which functions well in all clinical procedures and guarantees excellent tactile sensitivity. Ø 11.5 mm



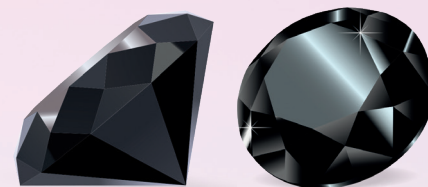


LMArte™ Dark Diamond edition

## PLEASANT AND PRECISE SCULPTING OF COMPOSITE

LM-Arte™ Dark Diamond instruments are the newest outcome of StyleItaliano™ and LM-Dental™ collaboration featuring exclusive coating for smooth and precise non-stick placement and sculpting of composite resins.

What do the clinical experts say? Scan the QR!



“

The sensitivity, flexibility and precision are the same as with conventional LM-Arte™ instruments, but the LM Dark Diamond™ coating eliminates the issue of resin sticking to spatulas, even for the most delicate resins.”

Dr. Paulo Monteiro, Member of StyleItaliano™



## LMDarkDiamond™ offering unique benefits!

- Contemporary diamond-like carbon (DLC) coating reduces stickiness for smooth composite placement
- Hard surface protecting the tip from scratches
- Smooth surface for easy cleaning
- Dark coating color for minimal reflections, and maximal contrast against filling
- Ergonomic LM-ErgoSense® handle for excellent precision and feel

### LM-Arte™ Dark Diamond set

Set of LM-Arte™ instruments with exclusive non-stick LM Dark Diamond™ coating in LM-Servo™ 5 cassette including Eccesso DD, Modella DD, Fissura DD, Applica DD and Condensa DD instruments

**LM-ErgoSense®** 6845ES



## PRODUCT RANGE WITH NON-STICK COATING



LM-Arte™ Eccesso DD

**LM-ErgoSense®** 307-308DDES



LM-Arte™ Modella DD

**LM-ErgoSense®** 442-443DDES



LM-Arte™ Fissura DD

**LM-ErgoSense®** 481-487DDES



LM-Arte™ Applica DD

**LM-ErgoSense®** 46-49DDES



LM-Arte™ Condensa DD

**LM-ErgoSense®** 488-489DDES

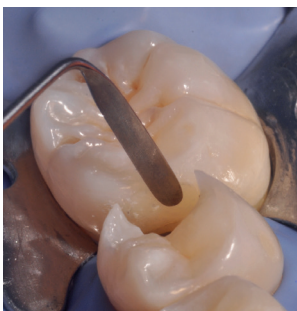


## APPLY ELASTICALLY

### LM-Arte™ Applica

A very thin, flexible spatula designed for transporting and esthetic modeling of the composite. The flexible working end gently and precisely sculpts composite layers to imitate the natural shape of the tooth. The thin tip of the Applica enables modeling in narrow spaces or against the matrix band. Instrument is available with non-stick LM Dark Diamond™ coating.

#### HOW TO USE

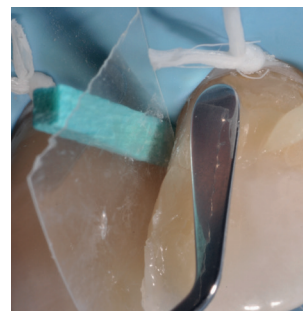


## APPLY WITH A TWIST

### LM-Arte™ Applica Twist

Especially fine, flexible and narrow spatula for composite modeling. The Applica Twist is used for easy modeling in the approximal spaces and marginal ridges in the matrix. Its bent tips make it possible to reach awkward areas without complicating the working position of the hand unnecessarily.

#### HOW TO USE



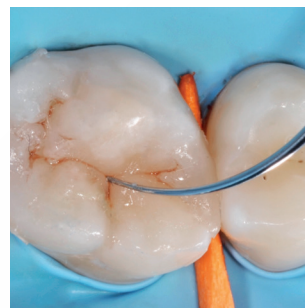
## MODEL FLEXIBLY

### LM-Arte™ Modella

Especially fine, wide spatula for composite modeling. Particularly suited to large tooth surfaces such as the buccal surfaces of the incisors. The wide spatula end flattens the composite effectively. The flexibility, delicacy and sharpness of the tip helps to create precise esthetic details. The spatula works well for applying the composite from a syringe. Instrument is available with LM Dark Diamond™ coating.

#### HOW TO USE





## PUSH SOFTLY

### LM-Arte™ Condensa

A long, round plugger designed especially for modeling a composite. Its angulated shanks enable unrestricted access to all cavities. Condensa has both a thick and a thin tip that can be used in cavities of different sizes, in both anterior and posterior areas. The rounded working end enables a delicate compacting of composite without any risk of adhesion.

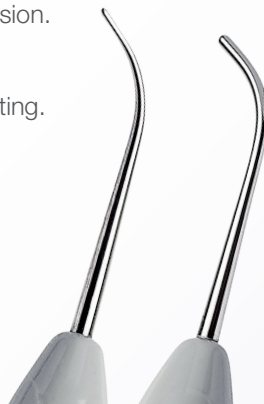
Instrument is available with non-stick LM Dark Diamond™ coating.

## SCULP DELICATELY

### LM-Arte™ Fissura

A modeling instrument with extremely sharp pointed tips. The conical tip is perfect for sculpting the anatomy of the occlusal area of the posterior teeth with just one instrument. The fine, probe-shaped tip is optimal for modeling fissures and mamelons as well as for layering characterization composites and sealants. The flexibility of the Fissura enables gentle probing to ensure there is no excess bonding resin remaining on tooth surfaces. Instrument is available with non-stick LM Dark Diamond™ coating.

## HOW TO USE



## HOW TO USE





LM-Arte™ Cusp Misura helps you to decide if a cusp should be prepared and covered or not. As the coverage of the cusp can be done directly, the LM-Arte™ Posterior Misura instrument steps in to enable direct cusp build-up procedures.



## EVALUATE EXPLICITLY

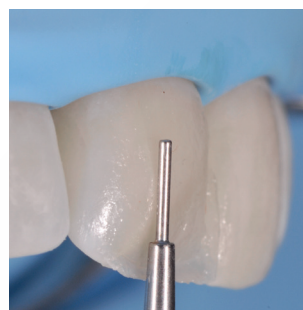
### LM-Arte™ Cusp Misura

Unique instrument for estimating cusp thickness and height for evaluating the need for cusp preparation when performing adhesive restorations. Ideal for evaluating the strength of the natural tooth structure and choosing the restorative technique to be used. If the forked instrument tip penetrates up to its marks, the tooth structure is too weak to withstand occlusal forces with a direct restoration, and other clinical options must be considered.

#### HOW TO USE







## FILL EVENLY

### LM-Arte™ Posterior Misura

Posterior version of the popular Misura instrument. Designed for providing the required vertical thickness of composite layers on posterior restorations. The forked tip of the instrument allows modeling of the proximal wall to match the height and anatomy of the neighboring tooth with the presence of a matrix.

#### HOW TO USE



## APPLY EVENLY

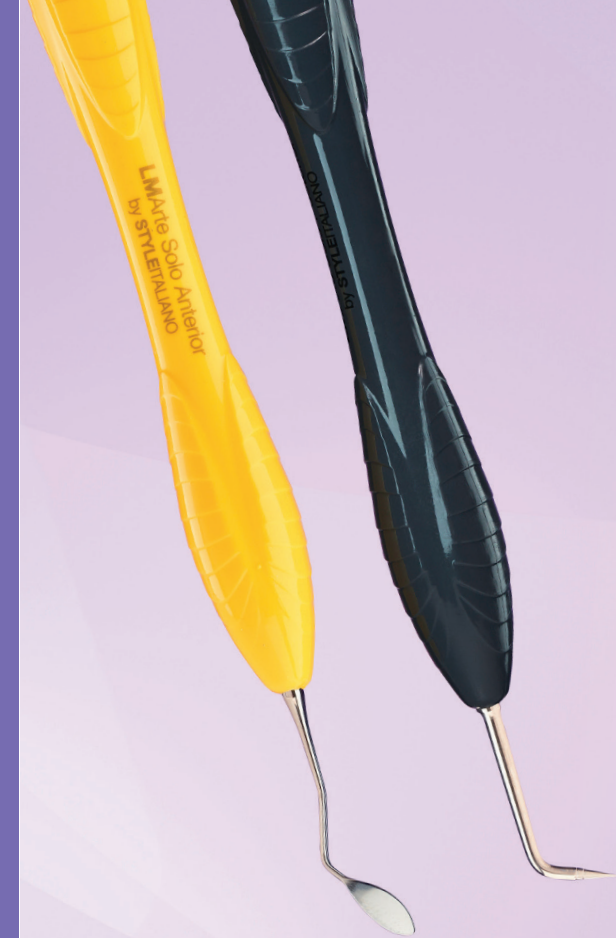
### LM-Arte™ Misura

A unique instrument used to apply the correct horizontal and vertical thicknesses of composite layers on the anterior restorations. After layering but before polymerization of the dentine composite, the

thinner, cylindrical tip is placed on the natural tooth enamel. The unpolymerized composite below the cylindrical tip is then gently modelled, leaving an optimal space for the enamel composite layer. The thicker, short tip of the Misura is placed horizontally at the margin of the prepared cavity, leaving the edge of the tip on the original enamel. This allows you to determine the right amount of transparent composite to apply on the finishing line. The final esthetic restoration consists of correctly balanced opaque and translucent composites, avoiding the unpleasant gray effect of some composites.

#### HOW TO USE





# INSTRUMENT DUO FOR SIMPLIFYING YOUR DAILY CASES

## LMArte™ Solo Anterior and Posterior

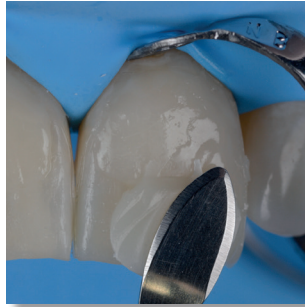
LM-Arte™ Solo instruments are ideal for simplifying your daily cases: with just two instruments, you can perform most of your high-end anterior and posterior restorations.

These instruments simplify everything from modeling to ergonomics and even hygiene, with fewer instruments needed on the tray. Streamline your restorative instrumentation with this duo that is all you need for your daily anterior and posterior direct composite restoration cases.

### HOW TO USE

Scan the QR for LMArte™  
Solo instruments how to  
use video





## ONE INSTRUMENT FOR DIRECT VENEERING LM-Arte™ Solo Anterior

Instrument for high-end esthetic anterior restorations. Rounded and straight spatulas are designed for modeling anterior teeth, especially labial surfaces.

**Sharp tip**  
Precision modeling  
Micromodeling  
Limit marking  
Scratching

**Thin blade**  
Proximal modeling

**Straight edges**  
Scraping

**Convex profile**  
One-point modeling  
Create depressions  
Create buccal profile  
Create cervical profile  
Access difficult areas

**Flat profile**  
Flattening  
Uniform

**Angled edge**  
Definition  
Scraping

**Sharpened edges**  
Cut, split, separate  
Marginal ridges

**Rounded tip**  
Delicate delimitation  
Cervical contouring

## ONE INSTRUMENT FOR POSTERIOURS LM-Arte™ Solo Posterior

Instrument for high-end posterior composite restorations. The plugger end is designed for bulk filling and composite material modeling. The sharp end enables contouring of the occlusal surface anatomy.

**Flat profile**  
Big excess removal  
Medium excess removal

**Flat end**  
Plugger

**4-5 mm bulk-fill safety area**  
Probe for bulk-fill materials

**Angulation**  
Access  
for deep  
cavities

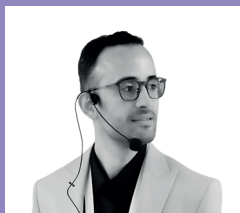
**Semi-rounded edges**  
Slope forming  
Excess removal  
Margin removal

**Tapered profile**  
Fine excess removal  
Slope modeling  
Secondary anatomy

**Sharp tip**  
Precision modeling  
Micromodeling  
Limit marking  
Scratching  
Flow distribution  
Bubble elimination

**LMArte™**  
Replica Posterior

**LMArte™**  
Replica Anterior



The uniquely designed LMArte™ Replica Posterior and Anterior instruments for modeling teeth surfaces have been developed in co-operation with Dr. Osama Shaalan, Member of StyleItaliano™ group.



**A**dapt



**S**hape



**R**eplicate

## REPLICATE EASILY

### LM-Arte™ Replica Posterior

Clever instrument designed for simplifying occlusal modeling of posterior teeth in direct composite restorations. The instrument makes occlusal modeling fast, simple and predictable. Occlusal anatomy of single tooth can be made easily guided by the buccal cusps using replica technique with this specific instrument. Instrument has one concave and one convex side.

#### **Concave surface**

- Cusp accentuation
- Ridge formation
- Cusp demarcation
- Removing excess composite

#### **Curved sharp edge for**

- Cutting
- Splitting
- Making grooves
- Cusp demarcation
- Marking curve

#### **Convex profile**

- Carrying composite
- Adaptation
- Narrowing grooves
- Making flat surface
- Smoothing
- Making depressions

#### **Side edges**

- Cutting
- Splitting
- Making lines

## HOW TO USE





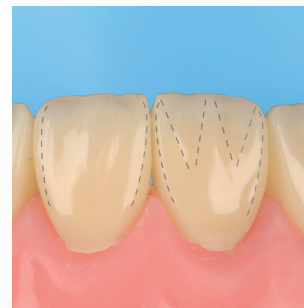
**NEW!**



**Adapt**



**Shape**



**Replicate**

## SIMPLIFY ANTERIOR ART

### LM-Arte™ Replica Anterior

LM-Arte™ Replica Anterior is a revolutionary instrument for anterior composite restorations combining simplicity and unique design. The instrument boosts the entire workflow starting from precise adaptation, then pre-forming the surface anatomy and shape, and finally minimizing the finishing process. It is excellent for adaptation, shaping, and replicating surface anatomy of the tooth.

The instrument has two similar mirrored working ends with sharp and thin tips.

LM-Arte™ Replica Anterior is complimentary to LM-Arte™ Replica Posterior instrument: this instrument duo provides one instrument solution for both anterior and posterior composite restorations.

#### HOW TO USE



#### Inner surface

- Creating depressions
- Forming surface grooves
- Creating convexities
- Forming ridges
- Replicating surface anatomy

#### Outer surface

- Carrying composite
- Making flat surface
- Surface adaptation
- Creating depressions
- Forming surface grooves
- Creating convexities
- Forming ridges
- Replicating surface anatomy

#### Curved sharp end

- Splitting
- Cutting
- Shaping mamelons
- Cervical adaptation
- Incisal embrasure modeling
- Palatal adaptation
- Carrying composite
- Creating grooves
- Accentuations

#### Side edges

- Removing excess composite
- Shaping mamelons
- Cutting
- Splitting





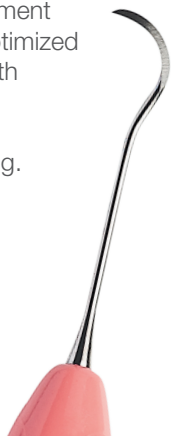
## FINISH NEATLY

### LM-Arte™ Eccesso

An instrument designed for the removal of composite and bonding residue. The special angulated working ends of the Eccesso are ideal for the removal of excess from cervical anterior and interproximal molar areas.

This fine but robust instrument is characterized by the optimized length, thickness and width of its blade. Instrument is available with non-stick LM Dark Diamond™ coating.

## HOW TO USE



## BE PART OF THE SUCCESS!

Visit StyleItalliano™ website at [www.styleitaliano.org](http://www.styleitaliano.org) for restorative clinical cases with LM-Dental's™ instruments



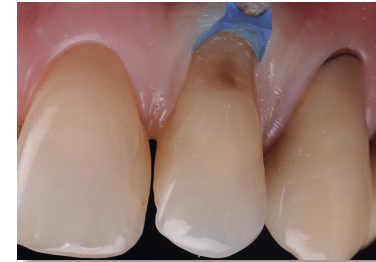
Follow and join the StyleItalliano™ community on social media channels



# OVERCOME THE GINGIVAL RETRACTING CHALLENGE - LMGengiva™

The aim in restorative treatment of a cervical lesion is to achieve perfect margin sealing, a strong bond and optimal polishing of the composite material. Mechanical gingival retraction in cervical restorations can be traumatic if improperly performed.

The LM-Gengiva™ instrument with gingival retractors is used to avoid injuring the gingiva unnecessarily and obtain the best clinical result. With this method, the desired end result is achieved: the soft tissue is not harmed and the esthetic requirements are met.



## GINGIVAL RETRACTORS

- Retract the gingiva from the restoration
- Hardness of the plastic tip allows for a strong retraction
- The plastic tips allow a certain flexibility for more adaptation while pressing
- The tip acts as a tight seal between the gingiva and tooth
- Protects the gingiva and reduces the likelihood of debonding failure
- The bonding interface and the gingival margin can be seen clearly; ideal contrast with soft tissues
- Can be customized with a drill to fit a convex or concave root detect
- No bonding of the adhesive materials to the tip surface
- No interference with polymerization
- Disposable



### LM-Gengiva™ gingival retracting kit

LMErgoSense® 7556KES

LMErgoMax™ 7556KXSI

Incl. LM-Gengiva™ hand instrument, blue gingival retractors (assortment of around 90 pcs, 30 pcs/size) and LM-MultiLever™ for the removal of plastic working ends.

# LMDental™

 LM-Instruments Oy

Norrbyn rantatie 8 | FI-21600 Parainen | Finland

Tel. +358 2 4546 400

info@lm-dental.com | [www.lm-dental.com](http://www.lm-dental.com)

